

## RIGA J UGR

| 1056 lm / per light source  
Tracklight

Performance Options	5W	9W	13W		
Source Lumens	285 lm	936 lm	1198 lm		
Delivered Lumens	206 lm	251 lm	503 lm	825 lm	1056 lm
Lumens / Watt	41 lm	28 lm	39 lm		
Voltage	350 mA	500 mA	700 mA		

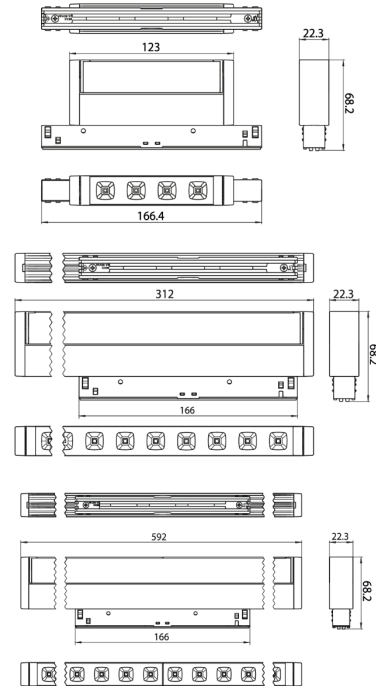
L1	RIGA J	—	—	—	—	—	V	—	—
Source	Model	Wattage	Kelvin	CRI	Lens	mA	Voltage	Length Inches	Color
L1	RIGA J: Riga J UGR	05:5W 09:9W 13:13W	30:3000k	B:95 C:90	UG:UGR < 19	250:250mA 500:500mA 700:700mA	2448:24/48/V	13:13" 24:24" 35:35"	BK:Black WS:White

Optional Emergency Backup Battery can be found on Products/[Accessories](#)

Generated on 04-27-2024

Project	
Type	
Contact	

The powered side of the mini track adapter is identified by the ETL label. Track is available as a standard in 48V. If 24V is required, it will be a custom order, please contact your sales person.



24 VDC 0-10V PWM DRIVER



**Features**

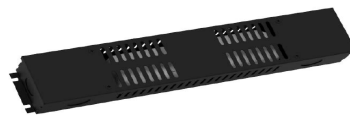
- ✓ Input range from 110 to 277 VAC, 50/60Hz
- ✓ Built-in active PFC Function
- ✓ Constant Voltage design (C . V mode)
- ✓ Class 2, Single Channel
- ✓ 0-10v Dimming to .1%
- ✓ Protections: Over current/short circuit

A1-PW96V-410BB-00-24-17-0T1D



SPECIFICATION

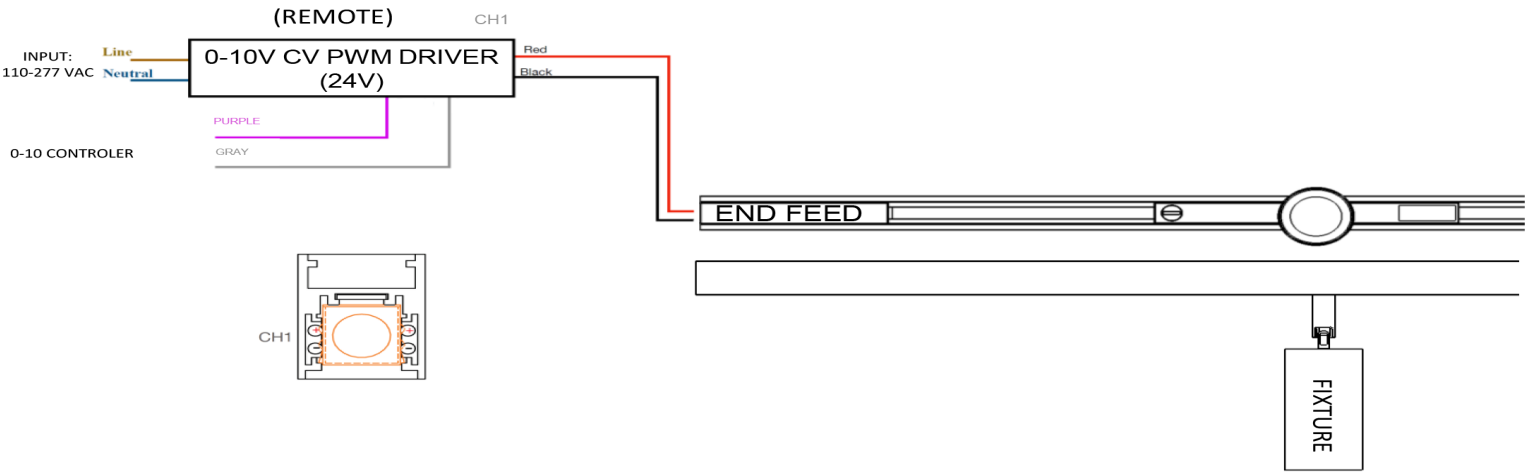
<b>Output</b>	<b>DC Voltage</b>	24VDC
	<b>Max Load</b>	96 W
<b>Input</b>	<b>Voltage &amp; Frequency Range</b>	110 - 277VAC ; 50hz/ 60 Hz
	<b>AC Current (Max.)</b>	0.96A Max
	<b>Inrush Current (Max.)</b>	5A MAax @ 120 Vac
<b>Protections</b>	<b>Over Voltage</b>	Yes
	<b>Short Circuit</b>	Yes
<b>Environment</b>	<b>Working Temp.</b>	-25°C +40°C
	<b>Storage Temp., Humidity</b>	-40°C +85°C
<b>Others</b>	<b>Dimension (L*W*H)</b>	12.10" (307.90mm) * 2.36" (59.9mm) * 1.40" (35mm)



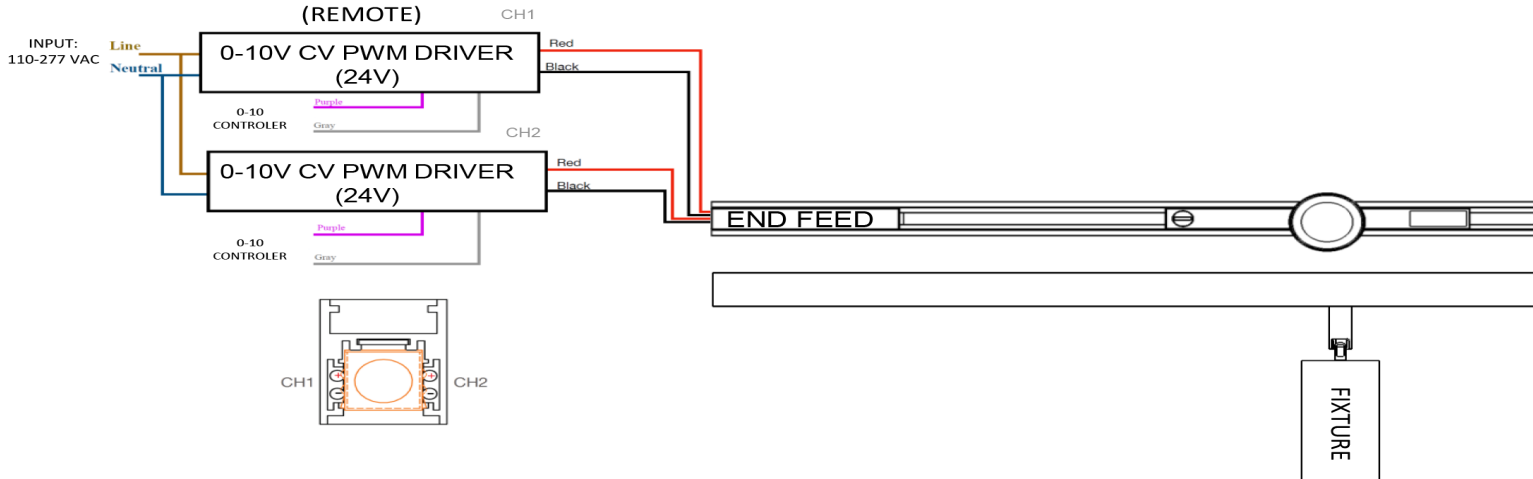
**Model: D-V4K-00-24-17-DLB0**  
Driver in metal housing

# WIRING DIAGRAM

## • 0-10V, Dali, ONE CIRCUIT



## • 0-10V, Dali, TWO CIRCUIT



**NOTE:**

MAXIMUM NUMBER OF THE LIGHTS CAN BE CONNECTED TO EACH CHANNEL DEPEND ON THE WATTAGE OF THE LIGHT. 25 LIGHTS AT 3W, 15 LIGHTS AT 5W, 10 LIGHTS AT 7W AND 8 LIGHTS AT 9W.

*\*The manufacturer reserves the right to change or modify the design, dimensions and specifications at anytime without notice. The manufacturer accepts no liability for consequential damage which is occasioned to the user base on the data provided.*

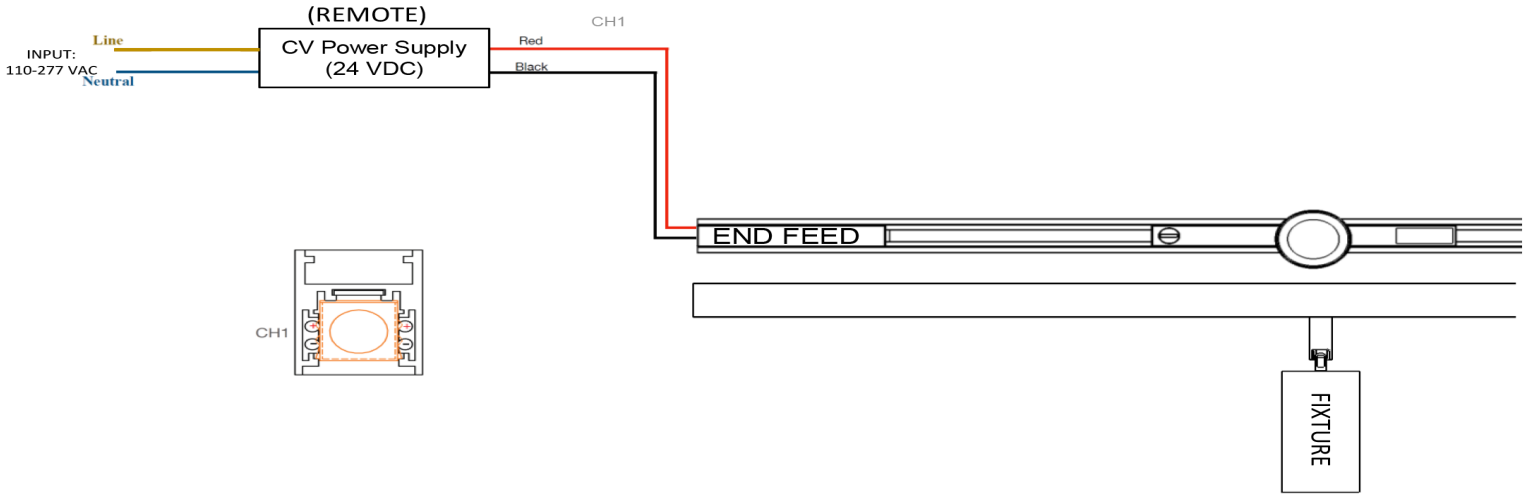
Zaniboni Lighting, 101 N Garden, Ste 230 • Clearwater, FL 33755 - Ph +17272130410 • Fx +17276839720 • www.zanibonilighting.com  
 Zaniboni Lighting shall not be held liable for any damages arising out of the use or misuse of its products nor any damages arising out of the alteration or modification of the instructed installation of its product.

9/22/2021

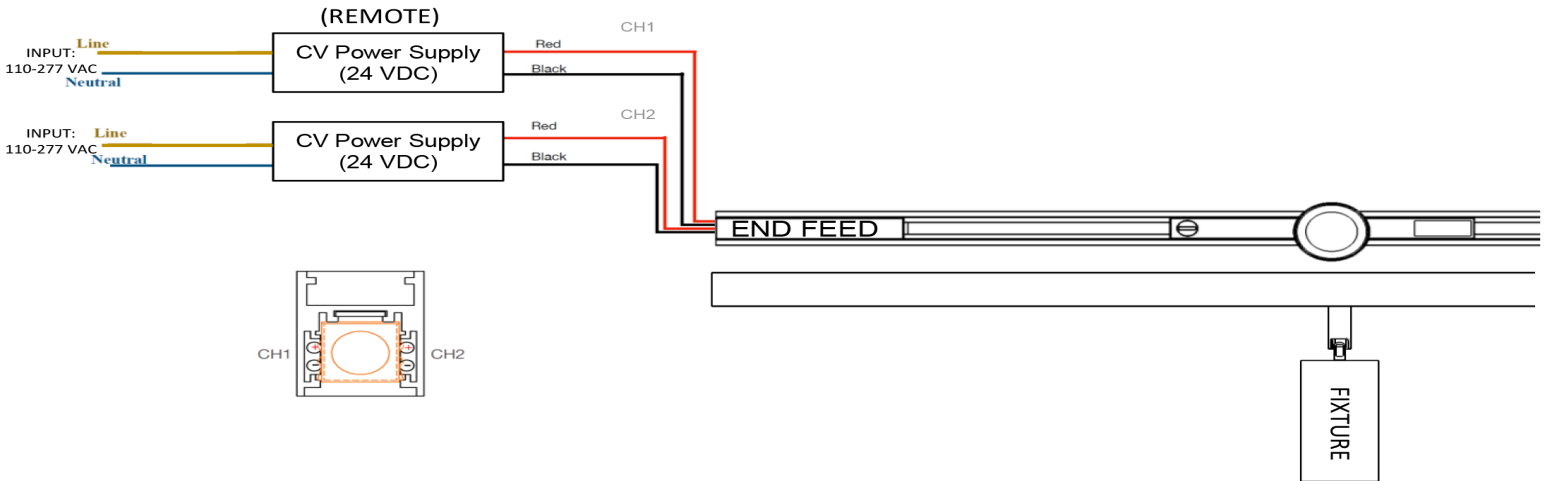
10

# WIRING DIAGRAM

## • ELV, Bluetooth ONE CIRCUIT



## • ELV, Bluetooth TWO CIRCUIT



### NOTE:

- ELV option available up to 7W.
- MAXIMUM NUMBER OF THE LIGHTS CAN BE CONNECTED TO EACH CHANNEL DEPEND ON THE WATTAGE OF THE LIGHT. 25 LIGHTS AT 3W, 15 LIGHTS AT 5W, 10 LIGHTS AT 7W AND 8 LIGHTS AT 9W.

*\*The manufacturer reserves the right to change or modify the design, dimensions and specifications at anytime without notice. The manufacturer accepts no liability for consequential damage which is occasioned to the user base on the data provided.*

Zaniboni Lighting, 101 N Garden, Ste 230 • Clearwater, FL 33755 - Ph +1(727)2130410 • Fx +1(727)6839720 • [www.zanibonilighting.com](http://www.zanibonilighting.com)  
Zaniboni Lighting shall not be held liable for any damages arising out of the use or misuse of its products nor any damages arising out of the alteration or modification of the instructed installation of its product.

9/22/2021

11

## Dimming compatibility

Zaniboni fixture are compatible with all major dimming protocol in the industry. Please refer to [zanibonilighting.com](http://zanibonilighting.com) for general compatibility and wiring diagrams. Zaniboni recommends testing your unique dimming configuration as the exact full configuration (Dimmer, drivers, fixture quantities, voltage) may affect dimming performance.