

Project	
Type	
Contact	

The powered side of the mini track adapter is identified by the ETL label. Track is available as a standard in 48V. If 24V is required, it will be a custom order, please contact your sales person.



RIGA J OPAL

| 1056 lm / per light source
Tracklight

Performance Options	9W	13W	18W		
Source Lumens	936 lm	1198 lm	1512 lm		
Delivered Lumens	206 lm	251 lm	503 lm	825 lm	1056 lm
Lumens / Watt	23 lm	19 lm	28 lm		
Voltage	500 mA	700 mA	900 mA		



L1	RIGAJ0	—	—	—	—	—	V	—	—
Source	Model	Wattage	Kelvin	CRI	Lens	mA	Voltage	Length Inches	Color
L1	RIGAJ0:Riga J Opal	09:9W 13:13W 18:18W	30:3000k	B:95 C:90	OP:OPAL	250:250mA 500:500mA 700:700mA	48:48V	13:13" 24:24" 35:35"	BK:Black WS:White

Optional Emergency Backup Battery can be found on [Products/Accessories](#)

Generated on **04-28-2024**

24 VDC 0-10V PWM DRIVER



Features

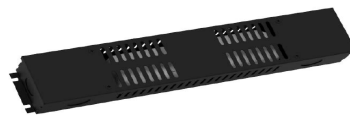
- ✓ Input range from 110 to 277 VAC, 50/60Hz
- ✓ Built-in active PFC Function
- ✓ Constant Voltage design (C . V mode)
- ✓ Class 2, Single Channel
- ✓ 0-10v Dimming to .1%
- ✓ Protections: Over current/short circuit

A1-PW96V-410BB-00-24-17-0T1D



SPECIFICATION

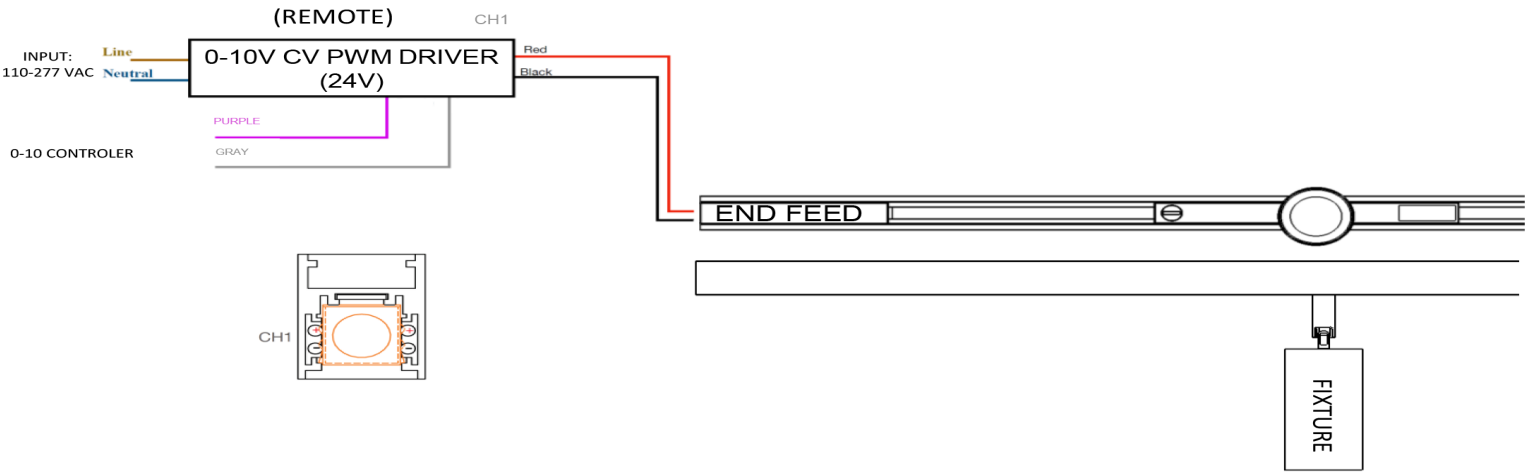
Output	DC Voltage	24VDC
	Max Load	96 W
Input	Voltage & Frequency Range	110 - 277VAC ; 50hz/ 60 Hz
	AC Current (Max.)	0.96A Max
	Inrush Current (Max.)	5A MAax @ 120 Vac
Protections	Over Voltage	Yes
	Short Circuit	Yes
Environment	Working Temp.	-25°C +40°C
	Storage Temp., Humidity	-40°C +85°C
Others	Dimension (L*W*H)	12.10" (307.90mm) * 2.36" (59.9mm) * 1.40" (35mm)



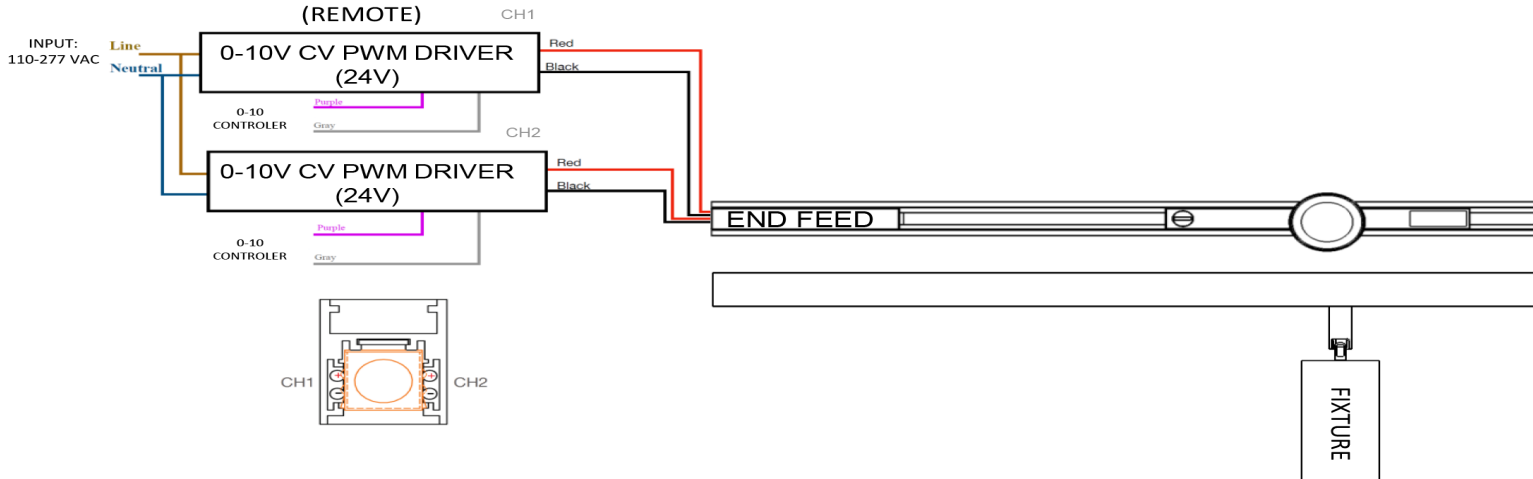
Model: D-V4K-00-24-17-DLB0
Driver in metal housing

WIRING DIAGRAM

• 0-10V, Dali, ONE CIRCUIT



• 0-10V, Dali, TWO CIRCUIT



NOTE:

MAXIMUM NUMBER OF THE LIGHTS CAN BE CONNECTED TO EACH CHANNEL DEPEND ON THE WATTAGE OF THE LIGHT. 25 LIGHTS AT 3W, 15 LIGHTS AT 5W, 10 LIGHTS AT 7W AND 8 LIGHTS AT 9W.

**The manufacturer reserves the right to change or modify the design, dimensions and specifications at anytime without notice. The manufacturer accepts no liability for consequential damage which is occasioned to the user base on the data provided.*

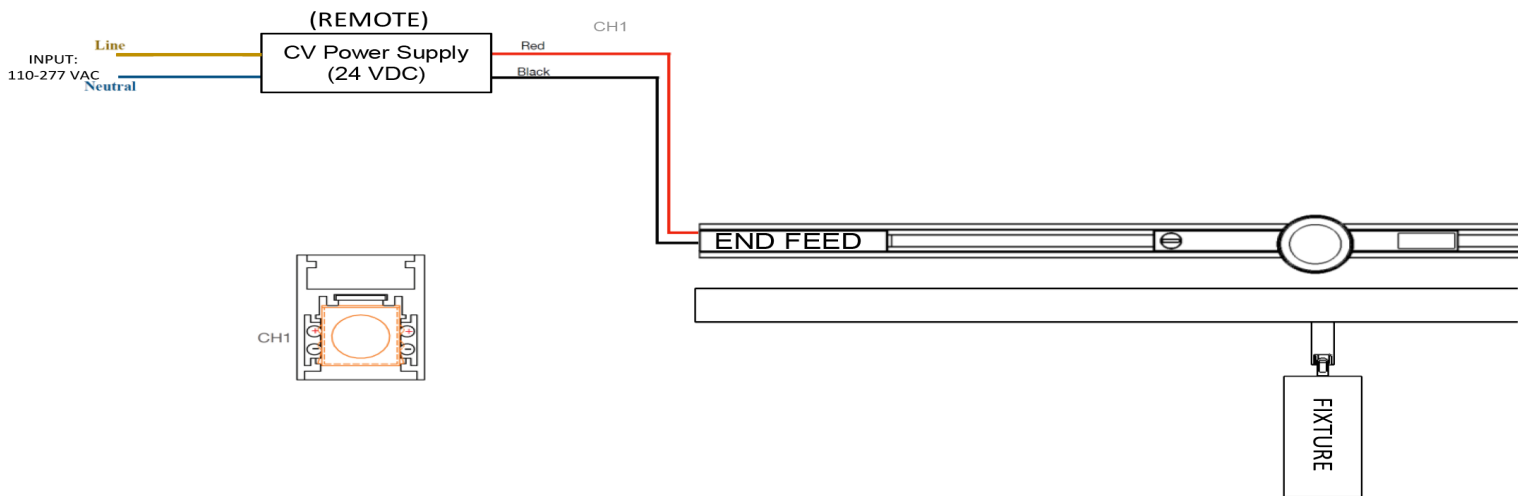
Zaniboni Lighting, 101 N Garden, Ste 230 • Clearwater, FL 33755 - Ph +1(727)2130410 • Fx +1(727)6839720 • www.zanibonilighting.com
Zaniboni Lighting shall not be held liable for any damages arising out of the use or misuse of its products nor any damages arising out of the alteration or modification of the instructed installation of its product.

9/22/2021

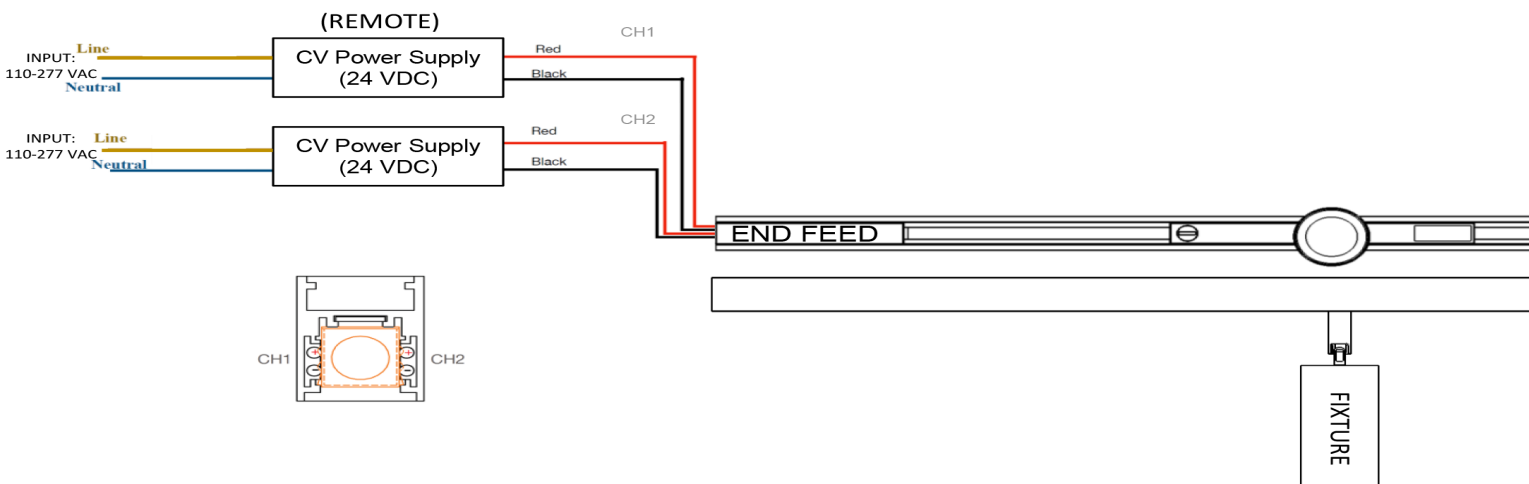
10

WIRING DIAGRAM

• ELV, Bluetooth ONE CIRCUIT



• ELV, Bluetooth TWO CIRCUIT



NOTE:

- ELV option available up to 7W.
- MAXIMUM NUMBER OF THE LIGHTS CAN BE CONNECTED TO EACH CHANNEL DEPEND ON THE WATTAGE OF THE LIGHT. 25 LIGHTS AT 3W, 15 LIGHTS AT 5W, 10 LIGHTS AT 7W AND 8 LIGHTS AT 9W.

**The manufacturer reserves the right to change or modify the design, dimensions and specifications at anytime without notice. The manufacturer accepts no liability for consequential damage which is occasioned to the user base on the data provided.*

Zaniboni Lighting, 101 N Garden, Ste 230 • Clearwater, FL 33755 - Ph +1(727)2130410 • Fx +1(727)6839720 • www.zanibonilighting.com
Zaniboni Lighting shall not be held liable for any damages arising out of the use or misuse of its products nor any damages arising out of the alteration or modification of the instructed installation of its product.

9/22/2021

11

Dimming compatibility

Zaniboni fixture are compatible with all major dimming protocol in the industry. Please refer to zanibonilighting.com for general compatibility and wiring diagrams. Zaniboni recommends testing your unique dimming configuration as the exact full configuration (Dimmer, drivers, fixture quantities, voltage) may affect dimming performance.