

DALIA 3U INSTALLATION INSTRUCTIONS

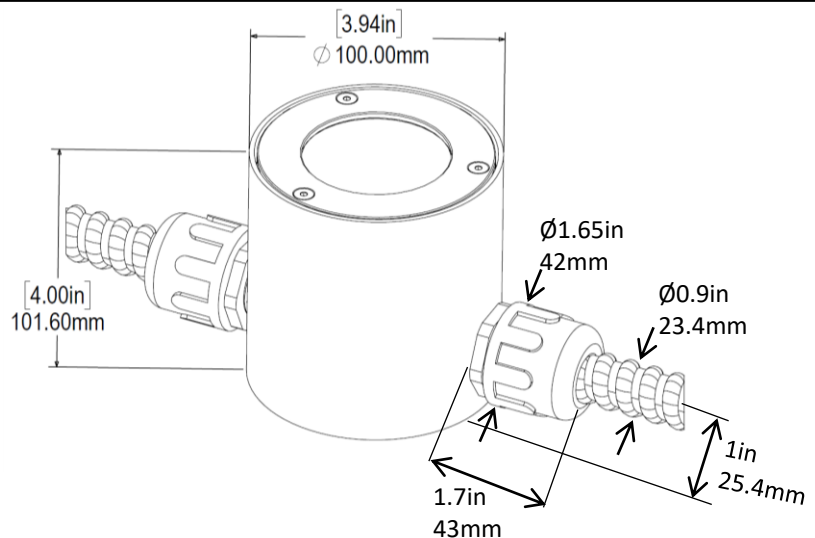


WARNING - RISK OF FIRE AND ELECTRICAL SHOCK. FIXTURE MUST BE INSTALLED BY A QUALIFIED ELECTRICIAN ONLY. FIXTURE IS INTENDED FOR INSTALLATION IN ACCORDANCE WITH THE NATIONAL ELECTRICAL CODE, LOCAL AND FEDERAL SPECIFICATIONS. DISCONNECT POWER AT ELECTRICAL PANEL BEFORE SERVICING.

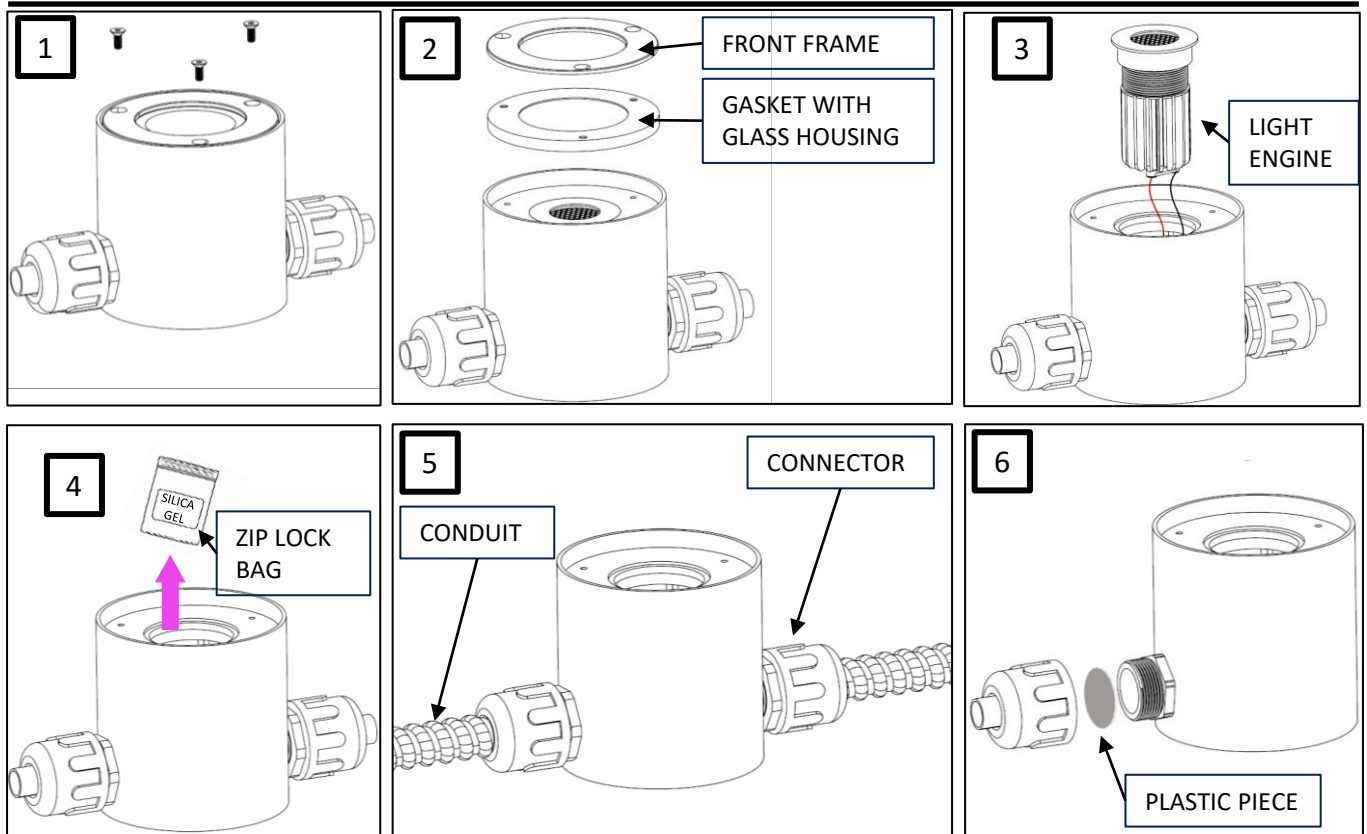
CONNECTION OF LUMINAIRE TO POWERED DRIVER WILL RESULT IN PERMANENT DAMAGE TO THE LED AND VOIDED PRODUCT WARRANTY.

RETAIN THESE INSTRUCTIONS FOR MAINTENANCE REFERENCE.

CUT-OUT DIMENSIONS

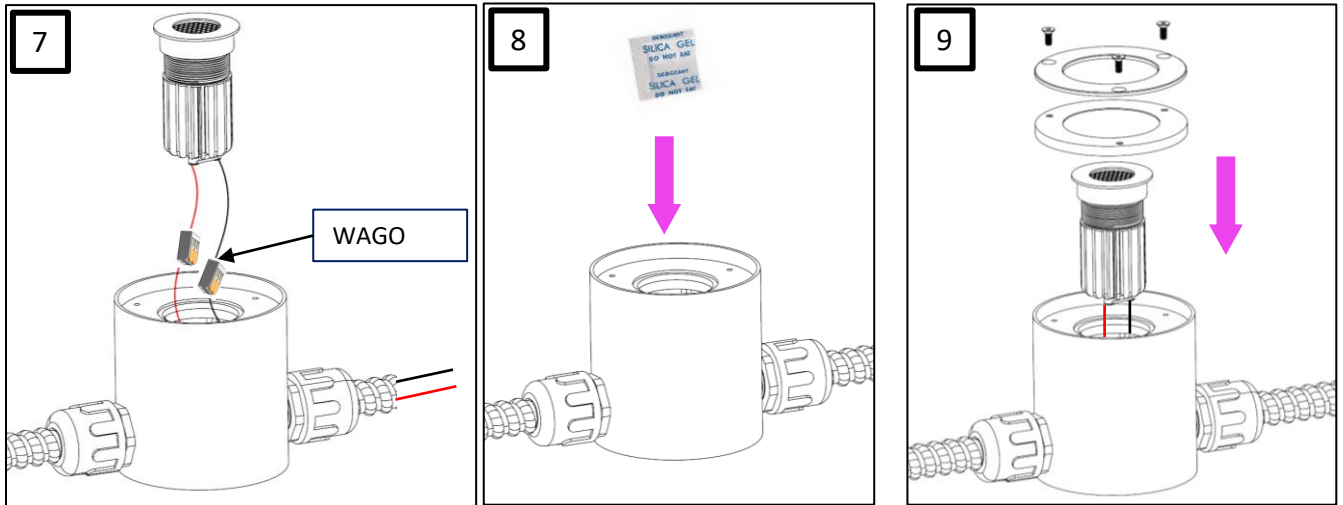


FIXTURE INSTALLATION



1. IN A DRY CLEAN ENVIRONMENT, OPEN THE FIXTURE.
2. REMOVE THE SCREWS FROM THE FRONT FRAME. (FIGURE 1)
3. REMOVE FRONT FRAME AND GASKET WITH GLASS HOUSING. KEEP NOTE OF HOW EVERYTHING FITS TOGETHER AS PROPER RE-ASSEMBLY OF THE DIFFERENT PARTS ARE VERY IMPORTANT TO OBTAIN PROPER PROTECTION. (FIGURE 2)
4. REMOVE THE LIGHT ENGINE. (FIGURE 3)
5. NOW YOU HAVE ACCESS TO THE BOTTOM OF THE STAINLESS BODY. REMOVE THE ZIP LOCK BAG THAT CONTAINS SILICA GEL BAGS FROM THE BOX. (FIGURE 4)
6. ATTACH THE ½" LIQUID TIGHT CONDUIT (PROVIDED BY OTHERS) TO THE LIQUID TIGHT CONNECTOR HUB ON THE SIDE OF THE STAINLESS BOX PUTTING TEFLON ON THE CONNECTORS BY INSIDE AND OUTSIDE OF THE BOX. (FIGURE 5)
7. IF THE BOX REQUIRES ONLY ONE CONDUIT, SEAL THE OTHER SIDE OF LIQUID TIGHT CONNECTOR WITH A CIRCULAR PLASTIC PIECE OF DIAMETER 1" USING SILICON. (FIGURE 6)

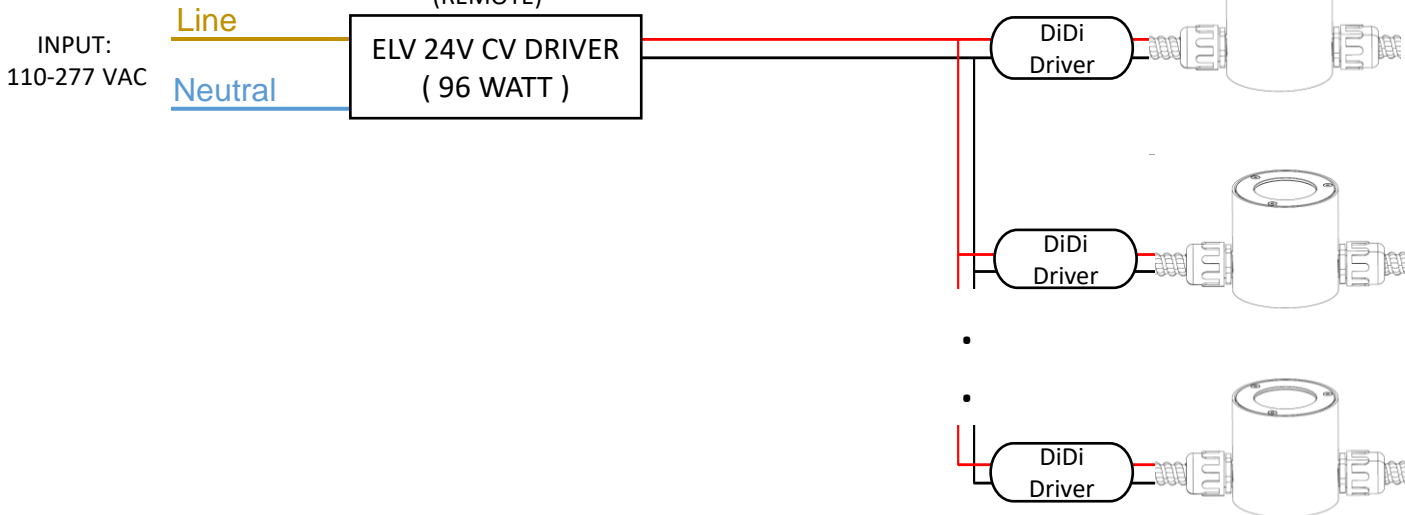
FIXTURE INSTALLATION



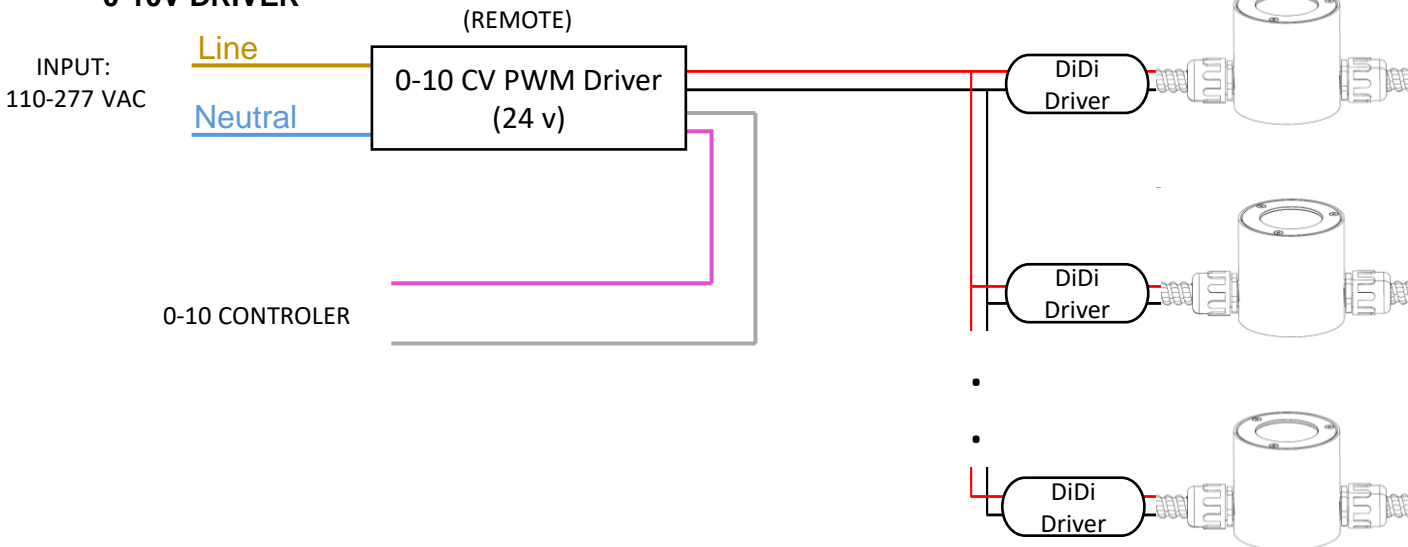
8. RUN LOW VOLTAGE WIRING (PROVIDED BY OTHERS) THROUGH THE CONDUIT INTO THE FIXTURE. FOR EVERY RUN, LEAVE AT LEAST 4" OF WIRE ABOVE THE TOP EDGE OF THE BOX TO MAKE THE CONNECTION EASIER. NOTE: USE PROPER WIRE GAUGE DEPENDING ON LENGTH OF RUN. FOR MORE INFO GO TO <https://zanibonilighting.com/wirecalculator.html>.
9. CONNECT THE LED ENGINE TO THE WIRING WITH THE WAGO CONNECTOR INCLUDED ON THE LED ENGINE KIT. (FIGURE 7)
10. REMOVE THE SILICA GEL BAGS FROM THE ZIPLOCK BAG AND PUT THEM ON THE BOTTOM OF THE STAINLESS BOX; DISCARD THE ZIPLOCK BAG. (FIGURE 8)
11. POSITION BACK THE LED ENGINE.
12. PLACE THE GASKET, GLASS HOUSING AND THE FRAME AS YOU ORIGINALLY FOUND THEM. (FIGURE 9)
13. SECURE THE FRONT FRAME WITH THE SCREWS (12 Nm TORQUE)
14. CONNECT WIRING TO THE POWER DRIVER.
15. CONNECT DRIVER TO LINE VOLTAGE AND VERIFY PROPER FUNCTIONING.
16. NOW IS TIME TO POSITION THE FIXTURE ON ITS FINAL LOCATION. MAKE SURE THERE IS AT LEAST 1" OF GRAVEL AT THE BOTTOM FOR DRAINAGE. POSITION THE FIXTURE IN ITS INTENDED LOCATION IN THE GROUND MAKING SURE THE TOP OF THE FRAME IS FLUSH WITH THE GRADE. POUR CONCRETE OR OTHER MATERILA TO COMPLETE INSTALLATION.

WIRING DIAGRAM – LOW VOLTAGE

• ELV, NON-DIM, BLUETOOTH DRIVER (REMOTE)



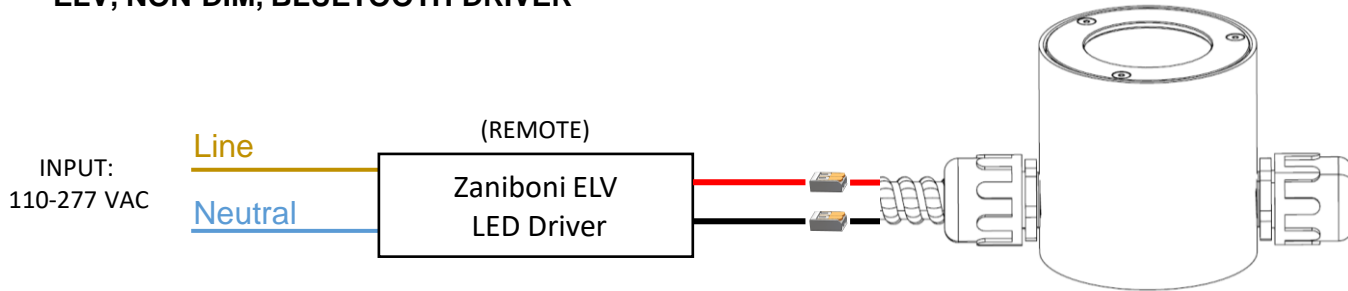
• 0-10V DRIVER



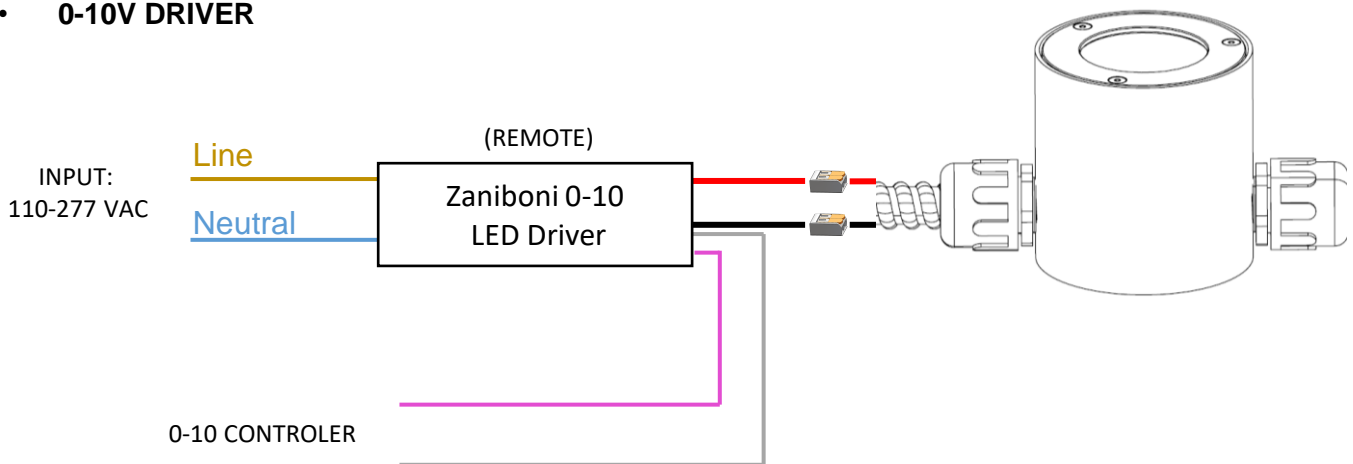
**The manufacturer reserves the right to change or modify the design, dimensions and specifications at anytime without notice. The manufacturer accepts no liability for consequential damage which is occasioned to the user base on the data provided.*

WIRING DIAGRAM – LINE VOLTAGE

- ELV, NON-DIM, BLUETOOTH DRIVER



- 0-10V DRIVER



**The manufacturer reserves the right to change or modify the design, dimensions and specifications at anytime without notice. The manufacturer accepts no liability for consequential damage which is occasioned to the user base on the data provided.*