

---

## MINI INSTALLATION INSTRUCTION

---



---

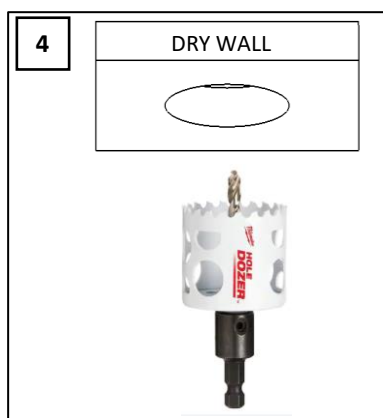
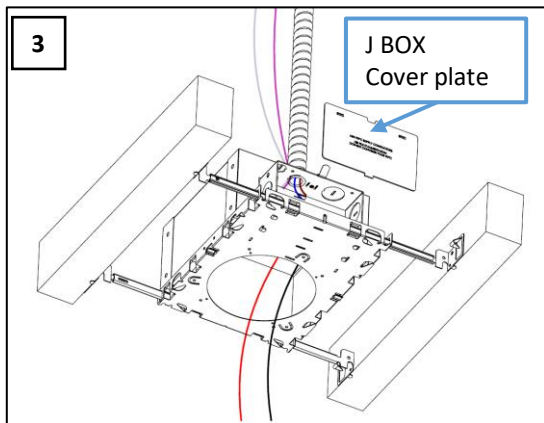
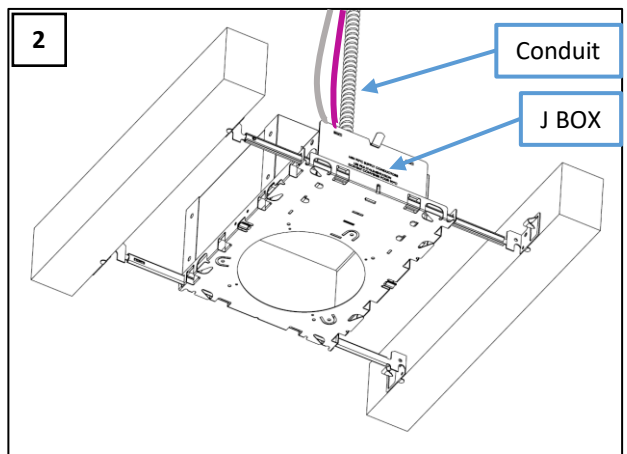
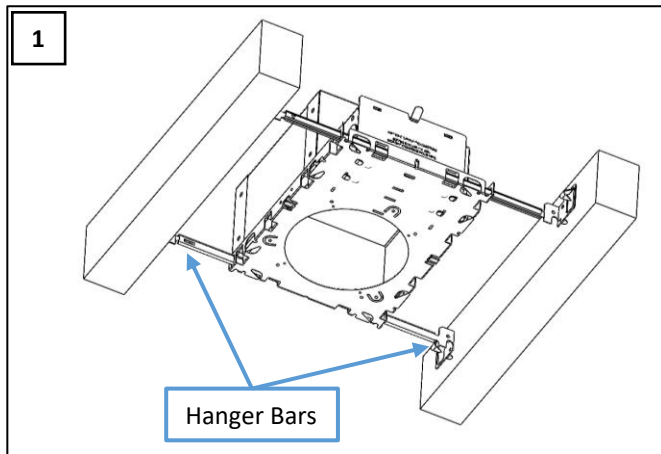
**WARNING - RISK OF FIRE AND ELECTRICAL SHOCK. FIXTURE MUST BE INSTALLED BY A QUALIFIED ELECTRICIAN ONLY. FIXTURE IS INTENDED FOR INSTALLATION IN ACCORDANCE WITH THE NATIONAL ELECTRICAL CODE, LOCAL AND FEDERAL SPECIFICATIONS. DISCONNECT POWER AT ELECTRICAL PANEL BEFORE SERVICING. CONNECTION OF LUMINAIRE TO POWERED DRIVER WILL RESULT IN PERMANENT DAMAGE TO THE LED AND VOIDED PRODUCT WARRANTY. RETAIN THESE INSTRUCTIONS FOR MAINTENANCE REFERENCE.**

---

## CUTOUT TABLE

FIXTURE	CUTOUT
MINI TD	2" (51 mm ) DIAMETER
MINI RD	1.125" (29 mm ) DIAMETER

# IC / NON-IC BOX INSTALLATION (NEW CONSTRUCTION)



## NOTE:

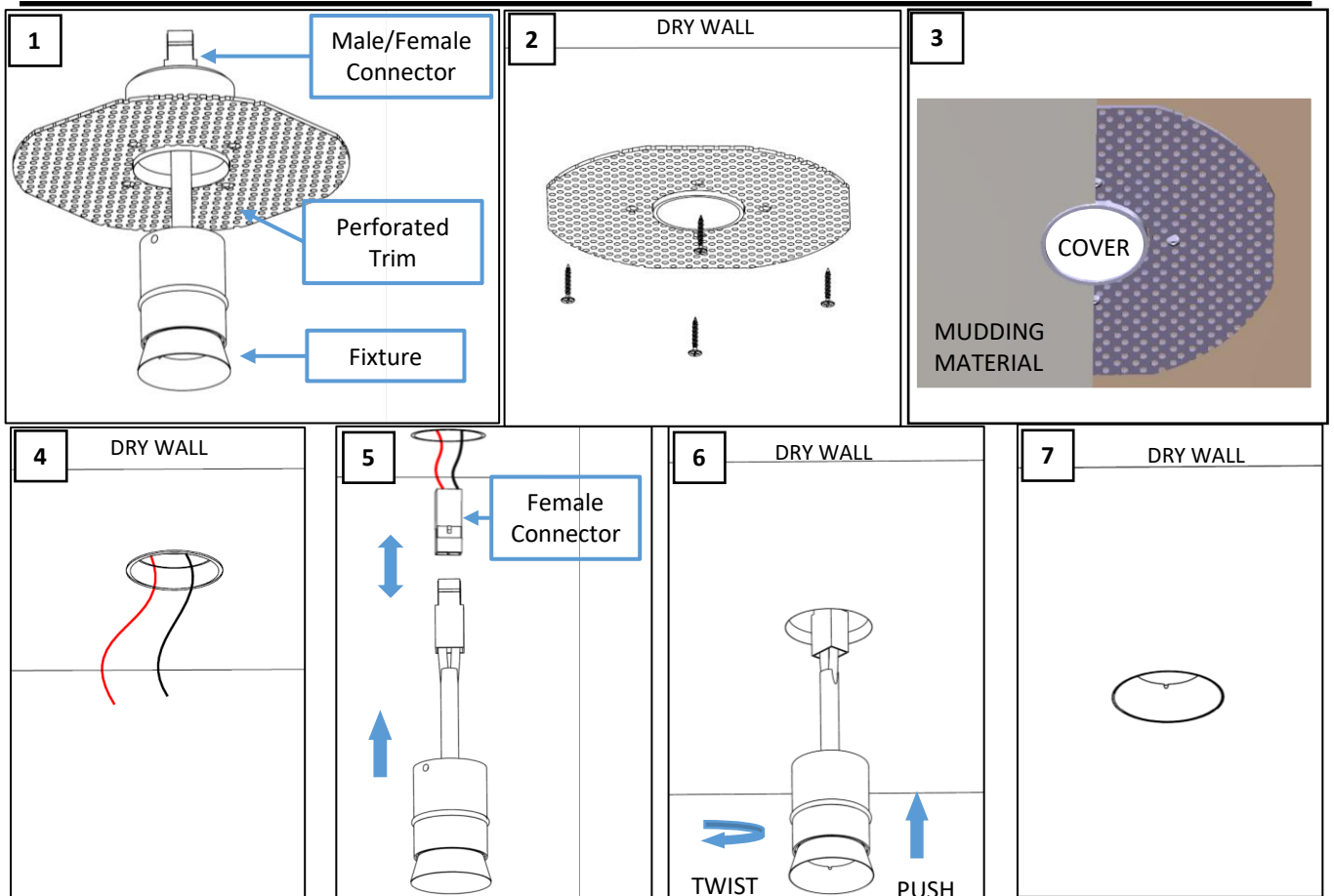
IN CASE OF CLASS 2 NON-IC BOX, USE MINI RETRO FIT / RETRO FIT BOX FOR THE DRIVER.

## NOTE:

- IN CASE OF ELV, NON-DIM AND BLUETOOTH DRIVER, PURPLE & GRAY WIRES ARE ABSENT.
- RUNNING 0-10V DIMMING WIRES IN THE SAME CONDUIT AS LINE VOLTAGE IS NOT RECOMMENDED. THEY NEED TO BE RAN SEPARATELY OR AT LEAST SEPARATED BY A CONTINUOUS BARRIER.

1. INSTALL IC RATED BOX USING HANGER BARS ABOVE THE CEILING. (FIGURE 1).
2. KNOCK OUT A HOLE IN THE J BOX AND RUN THE CONDUIT THROUGH IT. (FIGURE 2)
3. OPEN THE J BOX COVER PLATE AND PLACE THE DRIVER INSIDE THE J BOX AND CONNECT TO THE POWER LINES PULLED THROUGH THE CONDUIT. IF IT IS A 0-10V DRIVER, CONNECT THE WIRE (PURPLE AND GRAY) TO THE DIMMER MODULE. AND RUN THE LOW VOLTAGE WIRE (RED & BLACK) THROUGH THE IC BOX, OUT THROUGH THE OPENING BEFORE INSTALLING THE DRYWALL CEILING. (FIGURE 3)
4. CUT A HOLE IN THE DRYWALL USING THE CUT-OUT TABLE AS A REFERENCE (FIGURE 4)

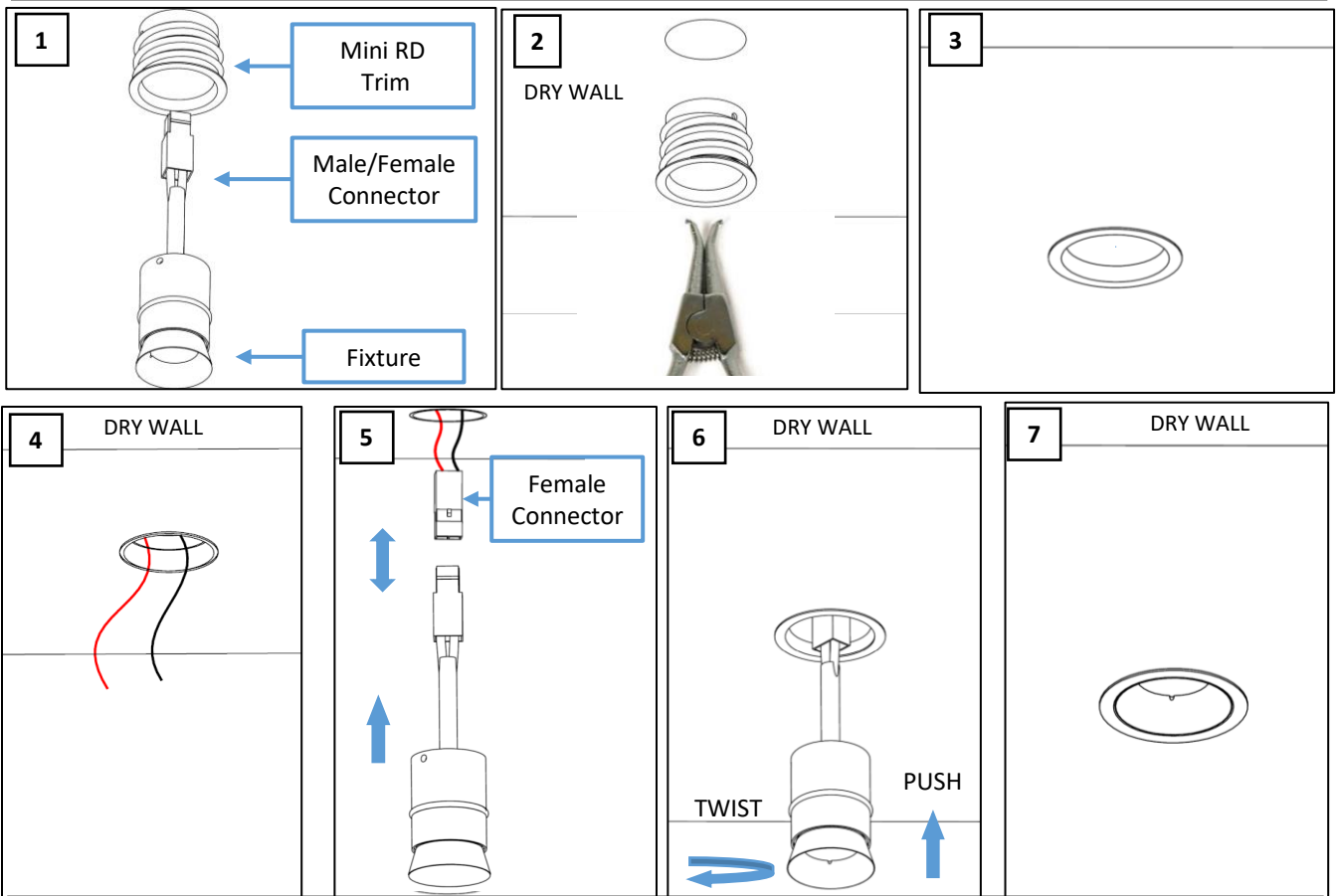
# MINI TD INSTALLATION



1. IF PERFORATED TRIM IS PACKED SEPERATELY USE IT FOR STEP 2 OR DIS-ASSEMBLE THE FIXTURE FROM THE PERFORATED TRIM. ( FIGURE 1 )
2. PUT THE PERFORATED TRIM INSIDE THE HOLE. INSTALL MUD RING USING FIBERGLASS TAPE ON THE EDGES OF THE PERFORATED SHEET. SECURE THE MUD RING WITH 4 NAIL IN THE HOLES OF PERFORATED SHEET. (FIGURE 2 )
3. COVER THE TRIM OPENING AND APPLY MUDDING MATERIAL OVER THE PERFORATED SHEET AND AROUND THE TRIM COLLAR AND FINISH THE CEILING ( FIGURE 3 )
4. PULL POWER LINES FROM THE REMOTE DRIVER THROUGH THE TRIM. (FIGURE 4 )
5. CONNECT THE LOW VOLTAGE POWER SUPPLY TO THE FIXTURE SPACE USING THE MALE/ FEMALE CONNECTOR. RED TO RED, BLACK TO BLACK. . (FIGURE 5 )
6. MAKE SURE BOTH TRIM AND CORE ARE CLEAN FROM DUST AND PAINT RESIDUE. TO SECURE THE FIXTURE, GENTLY PUSH AND ROTATE SO IT SMOOTHLY INSERT INTO THE TRIM. IF THE INSERTION IS HARD OR DIFFICULT, REMOVE THE FIXTURE, CLEAN THE TWO SURFACE AND ADD DROP OF WD 40 OR OTHER SILICON BASED LUBRICANT ON INNER SURFACE OF THE TRIM. INSERT AGAIN THE FIXTURE BY ROTATING AND PRESSING SMOOTHLT UNTIL THE FIXTURE IS LEVELED WITH THE FLANGE OF THE TRIM(FIGURE 6 )
7. TURN ON THE POWER SUPPLY. (FIGURE 7)

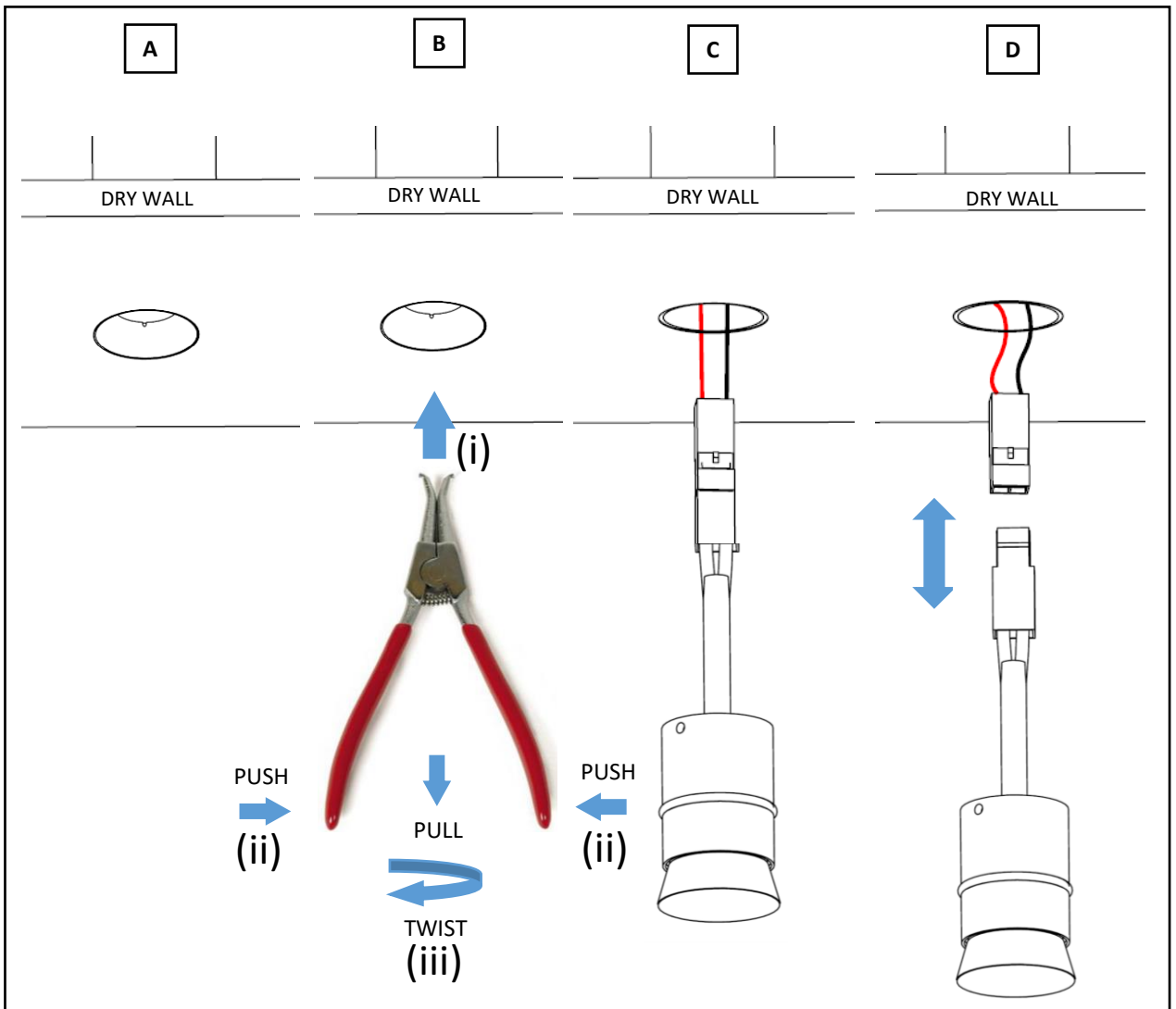
Zaniboni Lighting, 101 N Garden, Ste 230 • Clearwater, FL 33755 - Ph +17272130410 • Fx +17276839720 • [www.zanibonilighting.com](http://www.zanibonilighting.com)  
 Zaniboni Lighting shall not be held liable for any damages arising out of the use or misuse of its products nor any damages arising out of the alteration or modification of the instructed installation of its products.

# MINI RD INSTALLATION



1. IF MINI RD TRIM IS PACKED SEPARATELY USE IT FOR STEP 2 OR DIS ASSEMBLE THE FIXTURE FROM THE MINI RD TRIM. ( FIGURE 1 )
2. INSERT THE TOP PART OF THE TRIM INSIDE THE HOLE. FIRSTLY, START ENGAGING THE THREAD BY TWISTING WITH THE HAND, THE TRIM CLOCK-WISE. ENGAGE THE REVERSE PLIERS ON THE TWO HOLES ON THE TRIM AND CONTINUE ROTATING CLOCK-WISE UNTIL TRIM IS SCREWED WITH THE FLANGE AGAINST THE DRYWALL. (FIGURE 2 & 3)
3. PULL POWER LINES FROM THE REMOTE DRIVER THROUGH THE TRIM. (FIGURE 4 )
4. CONNECT THE LOW VOLTAGE POWER SUPPLY TO THE FIXTURE.USING THE MALE/ FEMALE CONNECTOR. RED TO RED, BLACK TO BLACK. PUSH THE FIXTURE IN THE TRIM, MAKE SURE ALL THE WIRES ARE UP IN THE CEILING. (FIGURE 5 )
5. MAKE SURE BOTH TRIM AND CORE ARE CLEAN FROM DUST AND PAINT RESIDUE. TO SECURE THE FIXTURE, GENTLY PUSH AND ROTATE SO IT SMOOTHLY INSERT INTO THE TRIM. IF THE INSERTION IS HARD OR DIFFICULT, REMOVE THE FIXTURE, CLEAN THE TWO SURFACE AND ADD DROP OF WD 40 OR OTHER SILICON BASED LUBRICANT ON INNER SURFACE OF THE TRIM. INSERT AGAIN THE FIXTURE BY ROTATING AND PRESSING SMOOTHLT UNTIL THE FIXTURE IS LEVELED WITH THE FLANGE OF THE TRIM. (FIGURE 6 )
6. TURN ON THE POWER SUPPLY. (FIGURE 7)

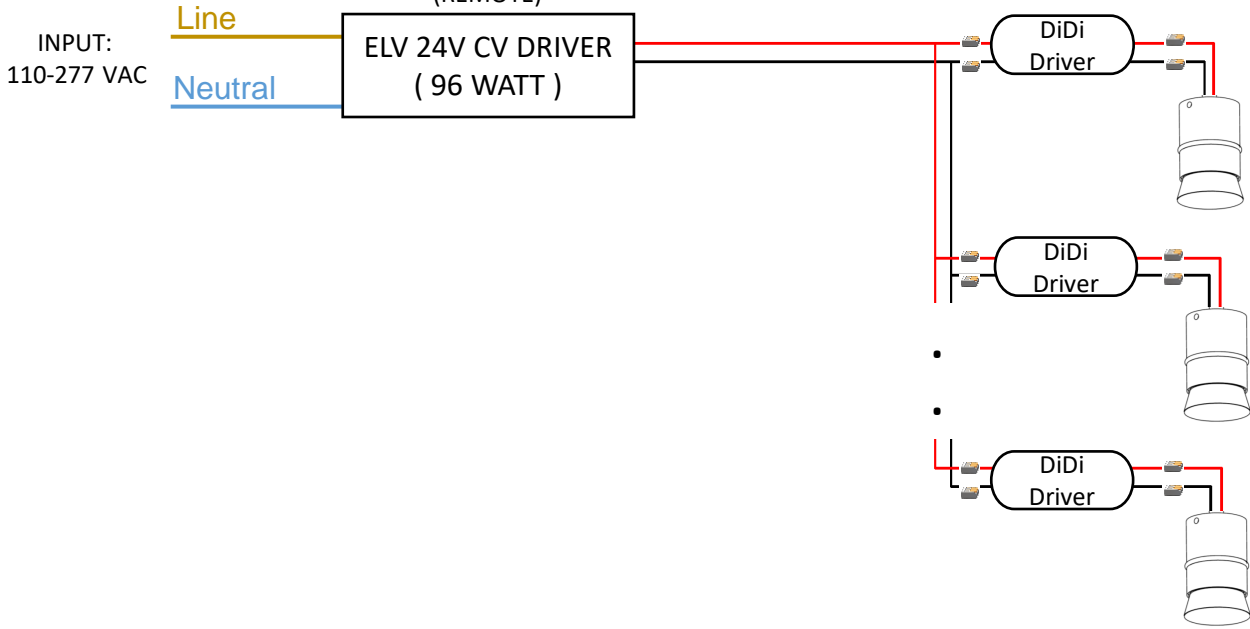
# FIXTURE MAINTENANCE



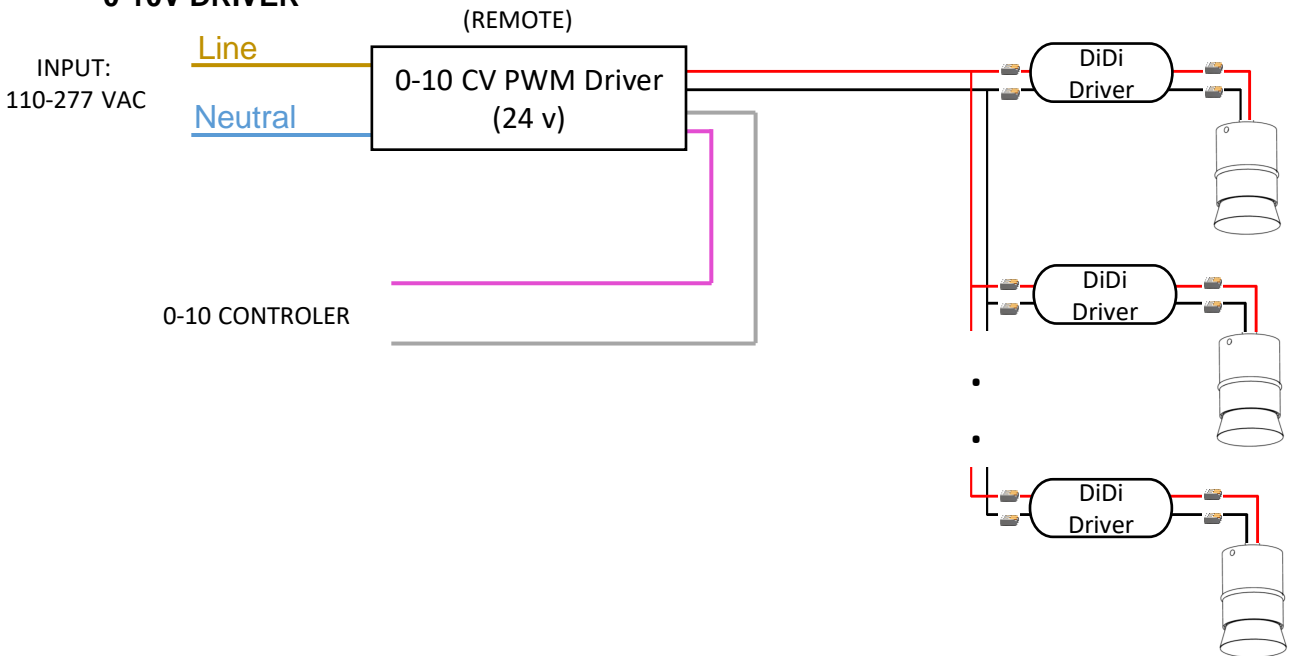
1. SWITCH OFF THE POWER SUPPLY BEFORE MAKING ANY CHANGES IN THE FIXTURE (FIGURE A)
2. USE REVERSE PLIERS TO GET A GRIP OF THE FIXTURE. TWIST THE FIXTURE GENTLY AND PULL SO IT UNLATCHES FROM THE TRIM. (FIGURE B)
3. PULL OUT THE FIXTURE FROM THE TRIM. ( FIGURE C )
4. DISCONNECT THE CONNECTORS AND CARRY OUT THE MAINTENANCE. (FIGURE D)
5. CONNECT THE WIRES BACK. PUSH THE FIXTURE IN THE TRIM, MAKE SURE ALL THE WIRES ARE UP IN THE CEILING.
6. TO SECURE THE FIXTURE MAKE SURE TO PUSH AND ROTATE SO IT LATCHES IN THE TRIM.

# WIRING DIAGRAM – LOW VOLTAGE

- ELV, NON-DIM, BLUETOOTH DRIVER**  
(REMOTE)



- 0-10V DRIVER**

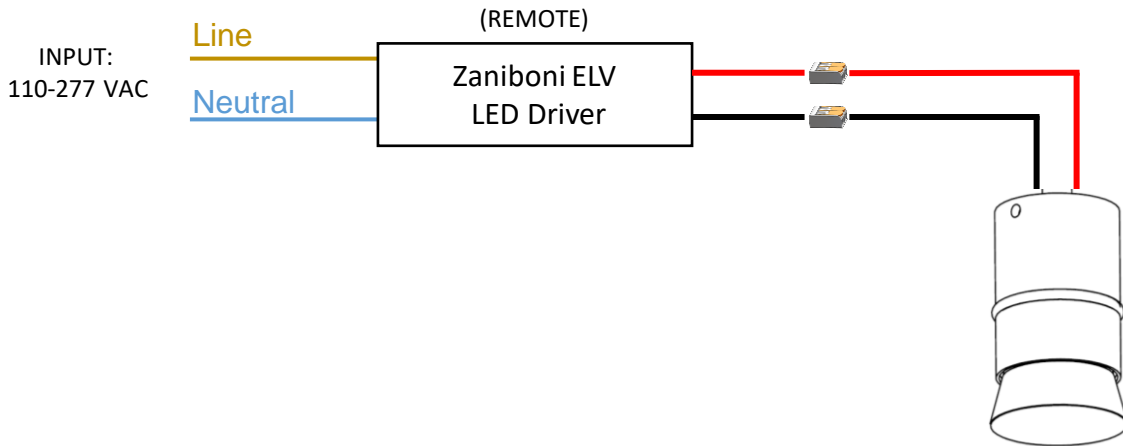


*\*The manufacturer reserves the right to change or modify the design, dimensions and specifications at anytime without notice. The manufacturer accepts no liability for consequential damage which is occasioned to the user base on the data provided.*

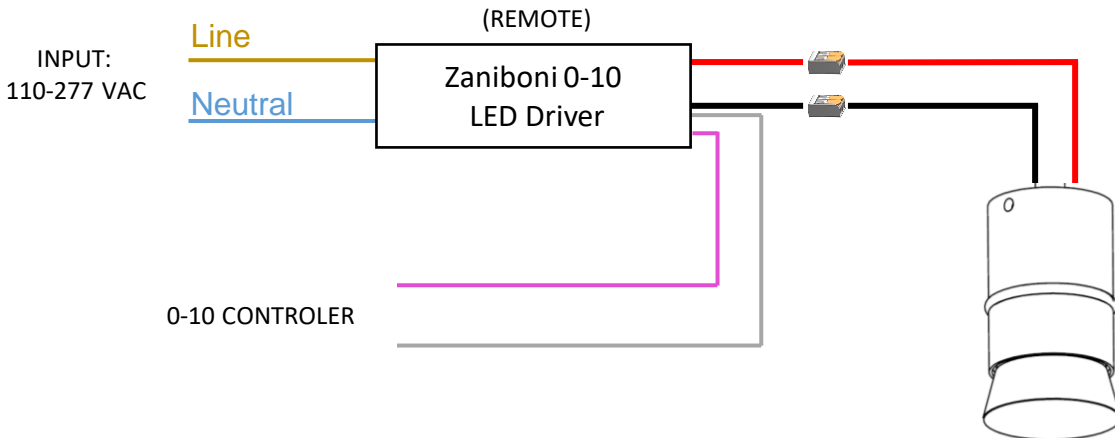
Zaniboni Lighting, 101 N Garden, Ste 230 • Clearwater, FL 33755 - Ph +17272130410 • Fx +17276839720 • [www.zanibonilighting.com](http://www.zanibonilighting.com)  
Zaniboni Lighting shall not be held liable for any damages arising out of the use or misuse of its products nor any damages arising out of the alteration or modification of the instructed installation of its products.

# WIRING DIAGRAM – LINE VOLTAGE

- **ELV, NON-DIM, BLUETOOTH DRIVER**



- **0-10V DRIVER**



*\*The manufacturer reserves the right to change or modify the design, dimensions and specifications at anytime without notice. The manufacturer accepts no liability for consequential damage which is occasioned to the user base on the data provided.*

Zaniboni Lighting, 101 N Garden, Ste 230 • Clearwater, FL 33755 - Ph +17272130410 • Fx +17276839720 • [www.zanibonilighting.com](http://www.zanibonilighting.com)  
Zaniboni Lighting shall not be held liable for any damages arising out of the use or misuse of its products nor any damages arising out of the alteration or modification of the instructed installation of its products.