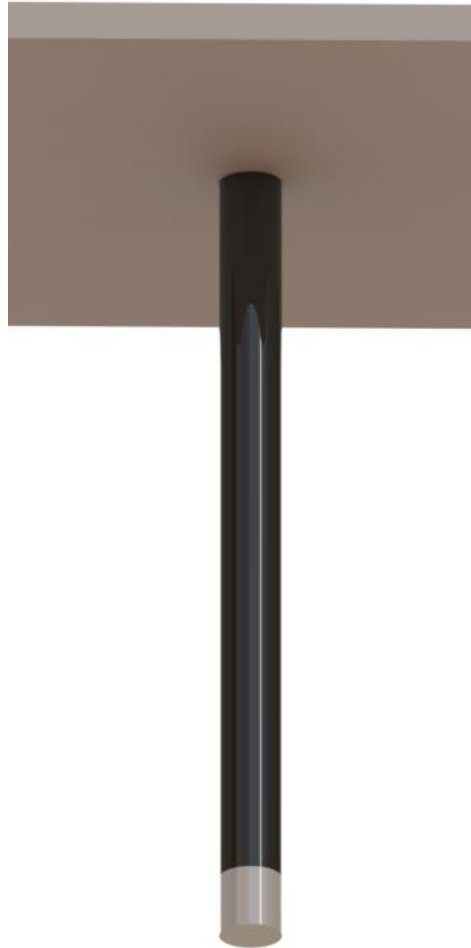
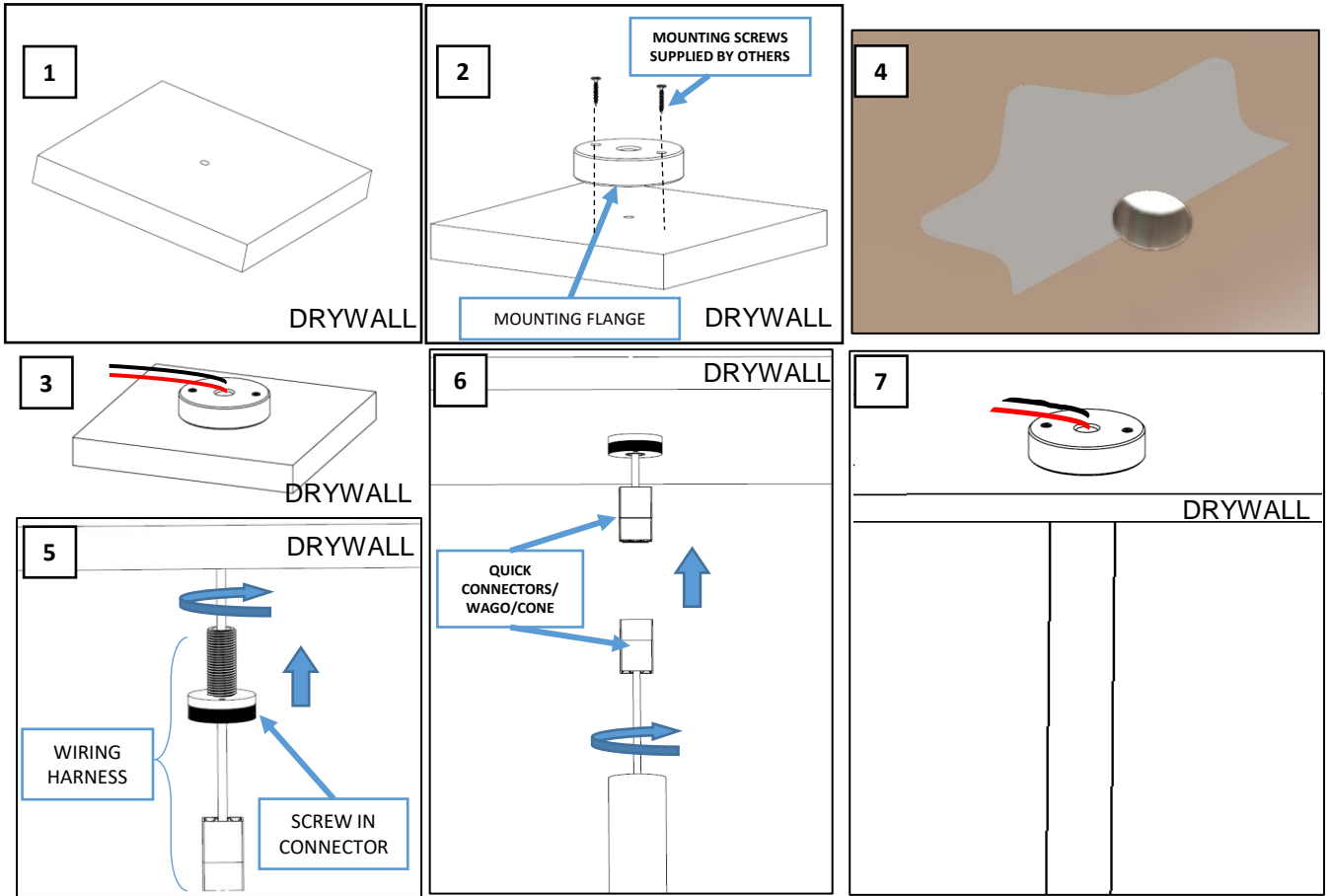


TiBi SURFACE INSTALLATION INSTRUCTIONS



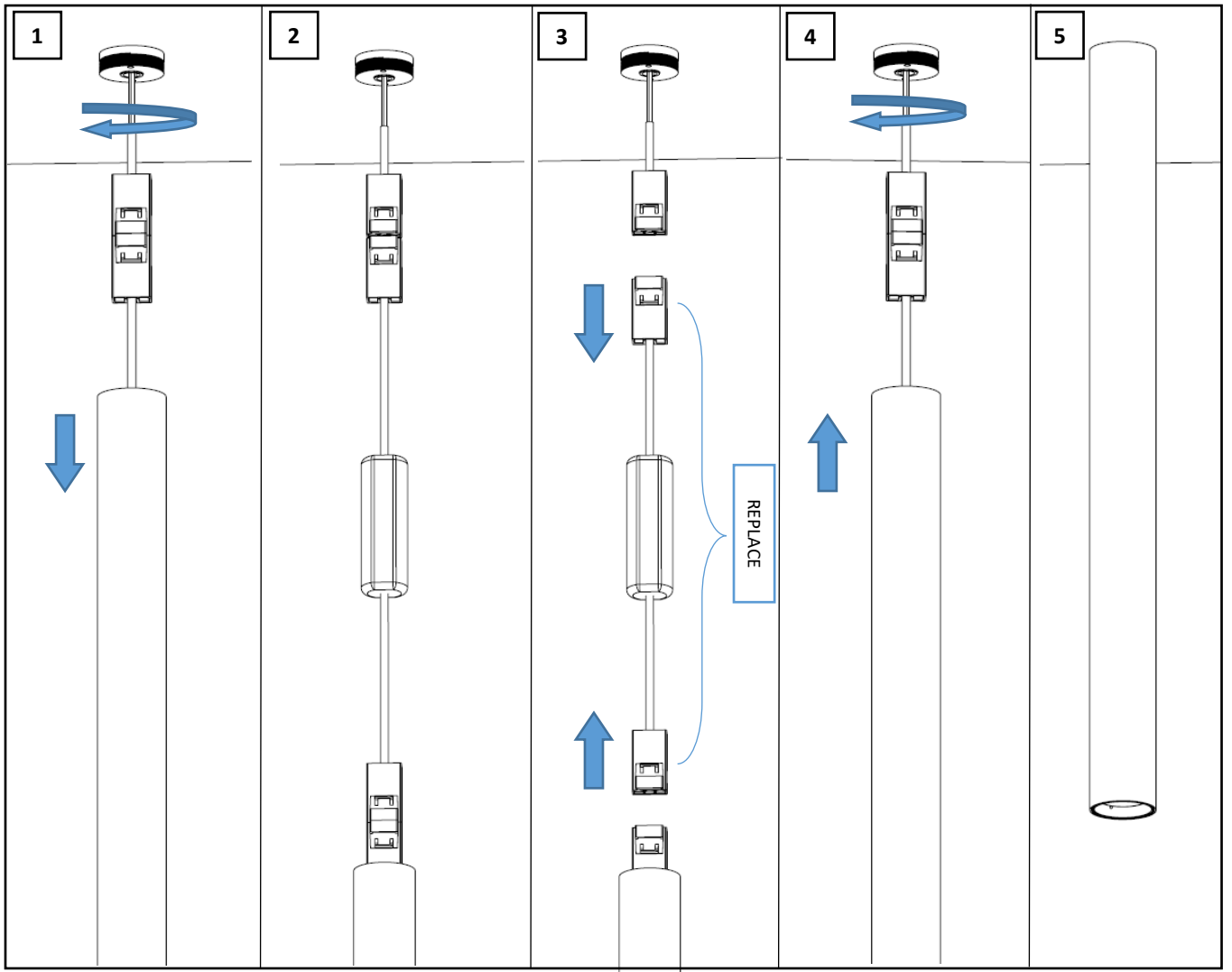
WARNING - RISK OF FIRE AND ELECTRICAL SHOCK. FIXTURE MUST BE INSTALLED BY A QUALIFIED ELECTRICIAN ONLY. FIXTURE IS INTENDED FOR INSTALLATION IN ACCORDANCE WITH THE NATIONAL ELECTRICAL CODE, LOCAL AND FEDERAL SPECIFICATIONS. DISCONNECT POWER AT ELECTRICAL PANEL BEFORE SERVICING. CONNECTION OF LUMINAIRE TO POWERED DRIVER WILL RESULT IN PERMANENT DAMAGE TO THE LED AND VOIDED PRODUCT WARRANTY. RETAIN THESE INSTRUCTIONS FOR MAINTENANCE REFERENCE.

FIXTURE INSTALLATION



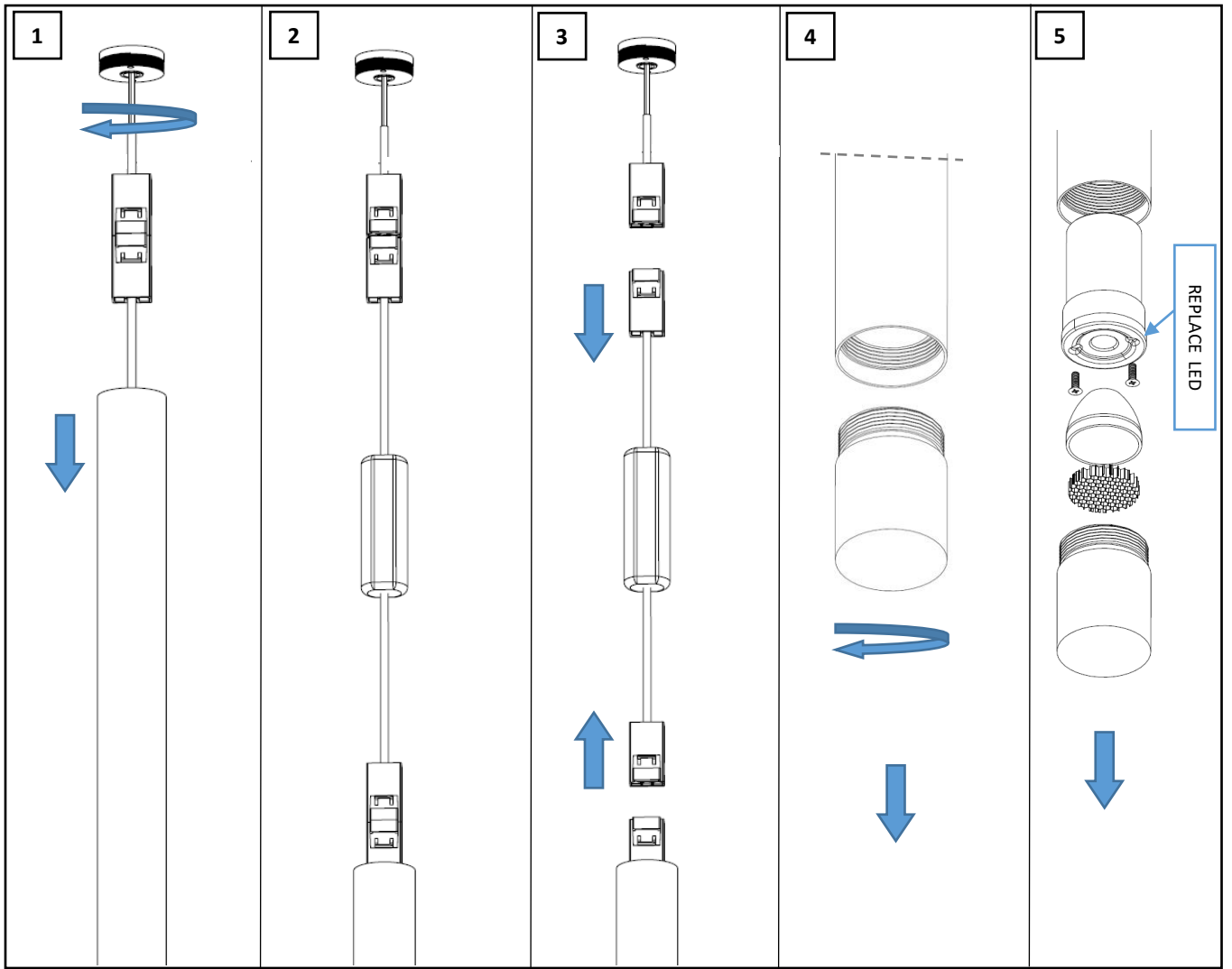
1. DRILL 7/16" HOLE THROUGH DRY WALL CEILING. PLACE MOUNTING FLANGE ON TOP SIDE OF THE DRYWALL. (FIGURE 1)
2. SECURE THE MOUNTING FLANGE WITH 2 X SCREWS OR GLUE TO DRYWALL, BEFORE DRYWALL GOES UP OR WITH ACCESS FROM ABOVE AFTER DRYWALL INSTALLATION (FIGURE 2)
3. CONNECT THE WIRING HARNESS THROUGH THE MOUNTING FLANGE. MAKE THE POWER CONNECTIONS. CONNECT RED AND BLACK WIRES FROM REMOTE DRIVER TO THE RED AND BLACK WIRES OF THE FIXTURE. (FIGURE 3)
4. FINISH THE CEILING COVERING THE HOLE. (FIGURE 4)
5. SECURE THE WIRING HARNESS TO THE MOUNTING FLANGE BY SCREWING THE SCREW-IN CONNECTOR. (FIGURE 3)
6. CONNECT THE TWO QUICK CONNECTORS, TUCK THE CONNECTORS AND WIRES INSIDE THE TIBI BODY. SECURE THE TIBI BODY TO THE SCREW-IN CONNECTOR. (FIGURE 4)
7. TURN ON POWER TO LIGHT FIXTURE.

FIXTURE MAINTENANCE DRIVER REPLACEMENT



1. SWITCH OFF THE POWER SUPPLY BEFORE THE MAINTENANCE.
2. UNSCREW TIBI BODY. (FIGURE 1)
3. PULL DOWN THE FIXTURE SO THE DRIVER IS VISIBLE. (FIGURE 2)
4. DETACH THE DRIVER BY DISCONNECTING THE QUICK CONNECTORS. (FIGURE 3)
5. REPLACE THE DRIVER AND CONNECT BACK THE QUICK CONNECTORS. PUT THE CONNECTORS AND WIRES INSIDE THE TIBI BODY. SECURE THE TIBI BODY TO SCREW IN THE TOP RING WITH THE MAIN BODY. (FIGURE 4)
6. TURN ON THE POWER.

FIXTURE MAINTENANCE LED REPLACEMENT



1. SWITCH OFF THE POWER SUPPLY BEFORE THE MAINTENANCE.
2. UNSCREW TIBI BODY. (FIGURE 1)
3. PULL DOWN THE FIXTURE SO THE DRIVER IS VISIBLE. (FIGURE 2)
4. DETACH THE DRIVER BY DISCONNECTING THE QUICK CONNECTORS. (FIGURE 3)
5. UNSCREW THE LENS (FIGURE 4) AND PULL DOWN THE HEX LOUVRE(IF IT'S PRESENT) REFLECTOR ANC HEAT SINK. UNSCREW THE TWO CIP HOLDER CREWS ,REPLAE THE LED CIP AND REPLACE BACK THE HEAT SINK,REFLECTOR,HEX LOUVRE AND CLOSE WITH THE LENS THREADING IT ON BODY (FIGURE 4).CONNECT QUICK CONNECTORS OF THE DRIVER AND CLOSE THE TOP COVER TREADING ON BODY
6. TURN ON THE POWER.